

Peer Recovery Support—It Works!

Addiction and Recovery

Over **20 million** Americans identify as in Recovery.

Yet only **10%** of adults who need treatment for addictions actually get services.

People need support to maintain abstinence and improve their lives before, during, and long after treatment.

**RECOVERY
LASTS
A LIFETIME.**

What are Peer Recovery Support Services?

PRSS are non-clinical, peer-run services that rebuild lives, reduce costs, and empower both peer leaders and people in new recovery.

[Peer leader training has] given us the opportunity to gain solid job skills and enhance a personal self-esteem that grows only when helping others.

—AIDS Service Center of New York City



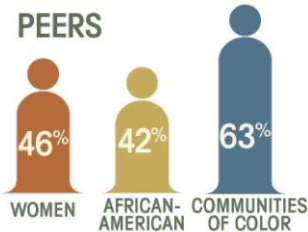
The Value of PRSS

Reach vulnerable communities

Peer services extend the reach of treatment beyond the clinical setting into people's every day environments. In 2011, SAMHSA's PRSS programs served a diverse group of peers:

Sustain recovery, build community

In a group of over 1,000 people in recovery who received peer-led services:



Employment or enrollment in school



Stable housing



Strong families

In Chicago, peer services reunited recovering parents with kids, saving the Department of Children and Families \$5 million.



The Value of PRSS (continued)

Build affordable, effective workforce

PRSS are anchored by rigorous peer training and codes of ethics. Peer specialists are often volunteers, making PRSS cost effective.

For the Connecticut Community for Addiction Recovery:



PRSS Change Systems

Cut Costs

Peer programs cut costs and leverage partnerships across service systems.



At Community Bridges, Inc. in Phoenix, peer specialists partnered with Fire and Police Departments to deliver peers from emergency settings to peer programs, **reducing the use of high cost crisis services by 22%.**

Services and activities need to be flexible...This means offering non-traditional service hours in non-traditional locations, sometimes using non-traditional methods.

—Center for Veterans Issues, Milwaukee, Wisconsin



Leverage Partnerships

Women in the San Diego County jail turn to Welcome Home Ministries (WHM) for peer services before and after release. **Seamless partnerships with the jail, courts, and treatment keep WHM's recidivism rate at 5%.**

...peer-to-peer services have not only changed lives, but changed the way services are viewed, developed and delivered by multiple Arizona housing providers.

—Women in New Recovery, Mesa, Arizona



Source: Meeting Report: Perspectives on the Evolution and Future of PRSS, SAMHSA/CSAT